

# Impact Demonstration Software

John Vel

05/08/2004

## Overview

The Impact Demo software is a functionally restricted version of Impact which is available to be used without a hardware key in order to evaluate Impact.

Most of the Impact functionality is available – only output functions such as exporting, plotting and printing have been disabled.

The software is usually configured to expire after 3 months.

Any drawings that you save using Impact Demo are encrypted to stop them being used by other Impact users, but may be later decrypted if you choose to purchase Impact.

You will require an activation code from your distributor. An Impact Demo activation is limited to one workstation. If you wish to move it to a new workstation, you will require a separate code. You should also avoid changing your workstation hardware during the evaluation period, as this will be interpreted as you using a different workstation.

## Starting Impact Demo

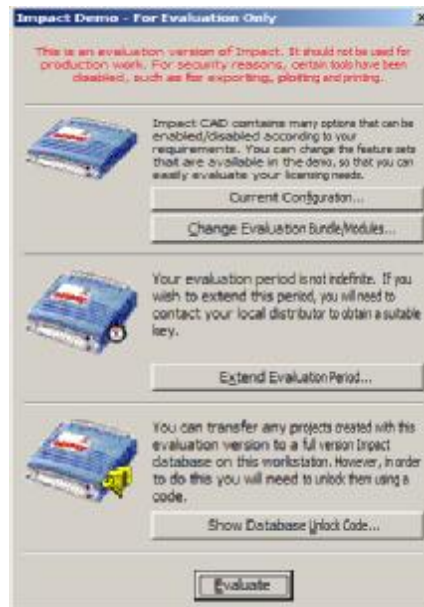
After installing Impact Demo, the first time you use it you are prompted to enter an activation code.



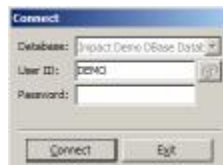
You should enter your name and press the button Generate Request Code. This displays a dialogue showing a code which you should send to your distributor.



distributor) or display your unlock code (required if you later choose to decrypt your database). This dialogue will appear each time you run Impact Demo.



On pressing Evaluate, you are prompted to log on to the demonstration database. The default user name is DEMO (there is no password for this user).



## ***Decrypting Your Database***

When you have completed your evaluation of Impact and have decided to purchase it, you may perhaps want to continue using the database of drawings which you have built up during your evaluation. To do this, you will need to decrypt these drawings (if you do not, Impact will produce warning messages when you try to access these drawings).

For the decryption, the full version of Impact must be installed on the same workstation that you used for Impact Demo.

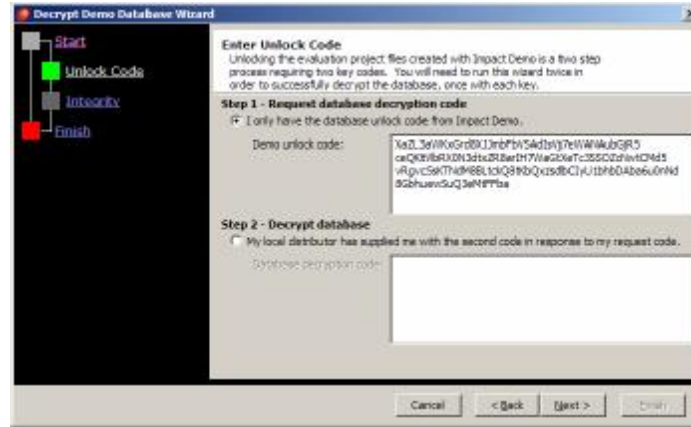
Before you start, make a safe backup of your evaluation database. Also, be sure to have your original activation code handy.

It is best to delay the uninstalling of Impact Demo until you have completed the decryption process.

Ensure Impact is connected to the evaluation database (you may wish to get your distributor to do this for you) and log in as ADMIN.

The decryption is a two stage process – for each step you need to use Database > Administration, and from this dialogue use Tools > Wizards > Decrypt Demo Database Wizard.

For stage one, enter your original activation code.

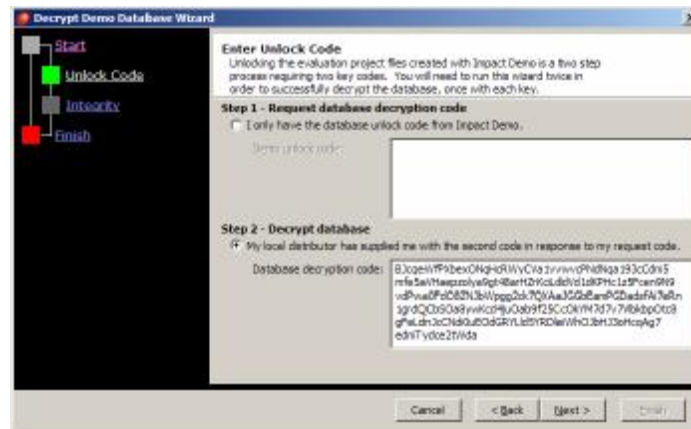


Some database consistency checks can be performed prior to the decryption – it is recommended that you leave these options enabled.

The tool converts each drawing, revision, symbol and template which you have created. At the end of step 1 another code is shown - you need to send this to your distributor. A log is displayed showing the drawings decrypted (any example drawings which you have not modified will not need decrypting – these are skipped).



Your distributor will send you a final code. Run the Decrypt Demo Database Wizard again, choose step 2 and enter this code.



Upon completion of this second step, all the drawings in your database may now be accessed normally from Impact.